

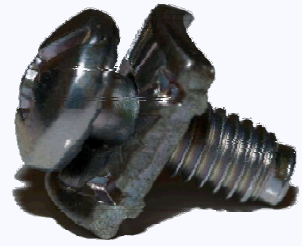
# Cable Clamp Combination Screws

We are specialists in all types of  
cable clamp combination screws.



## Cable Clamp Combination Screws (SEMS Screws)

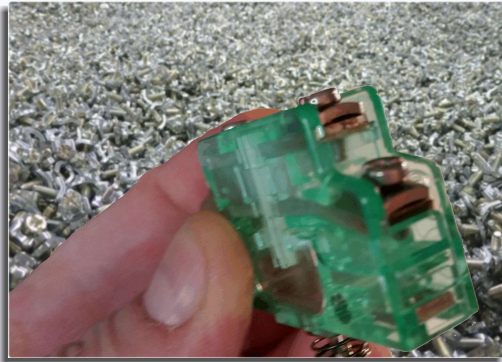
Are essential for the electrical industry, since they guarantee contact reliability and security at the interfaces of many different components. This particular type of screw mostly consists of a combination of a screw and washer



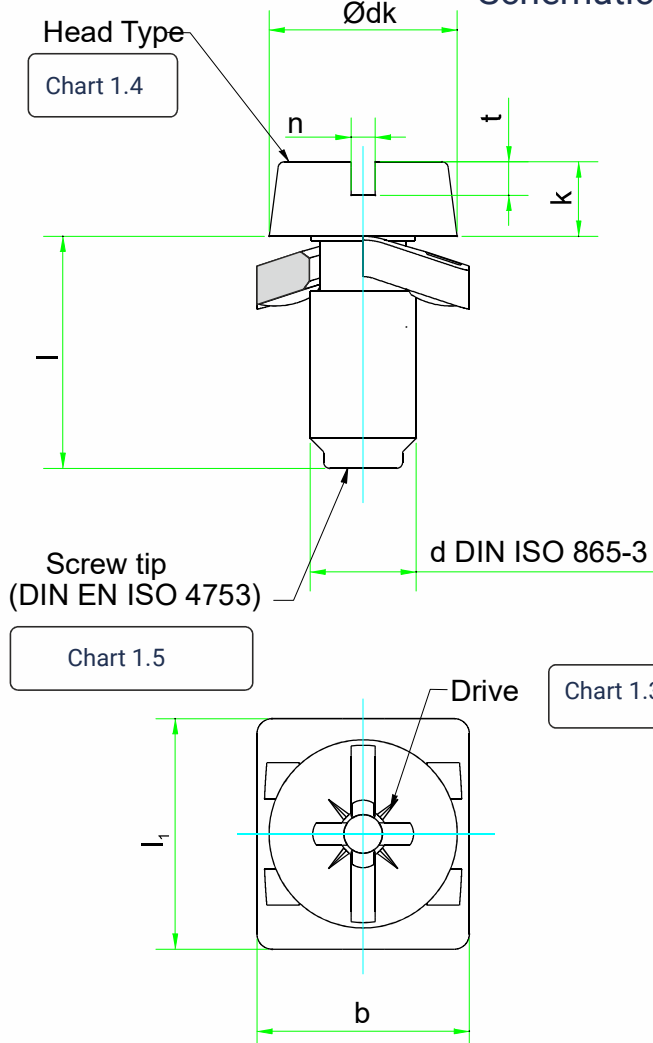
that are undetachable linked to each other.

We produce and assemble this type of screw since more than 40 years in large and small series.

You must take advantage of our extensive know-how and vast experience and even very special measurements are no problem for us. Challenge us!



## Schematic-/ Dimensional drawing



Screw thread according to DIN ISO 965-3

Standard measure „d“:

**M2,5 | M3 | M3,5 | M4 | M5 | M6**

or  
Special designs and shaft lengths according to customer requests.

Chart 1.0

Standard measure					
d	d <sub>k</sub>	k	n	t	l <sub>1</sub>
M3	4,2	2	0,8	0,9	5,0
	-	-	-	-	-
M3,5	6,0	2,4	1,0	1,2	10
	-	-	-	-	-
M4	5,5	2,4	0,8	1,2	5,0
	-	-	-	-	-
M5	6,3	2,7	1,0	1,3	12
	-	-	-	-	-
M6	7,0	2,6	1	1,3	7,0
	-	-	-	-	-
M5	7,0	2,6	1,25	1,5	15
	-	-	-	-	-
M6	8,5	3,3	1,2	1,6	7,0
	-	-	-	-	-
M6	8,5	3,5	1,5	1,8	20
	-	-	-	-	-
M6	10	3,9	1,6	2,0	7,0
	-	-	-	-	-
M6	10	3,9	1,6	2,0	25
	-	-	-	-	-

Please contact us, we will be happy to advise you individually:

Property classes for screw acc. to ISO 898				
4.8	5.8	6.8	8.8	10.9

Chart 1.1

### Locking teeth

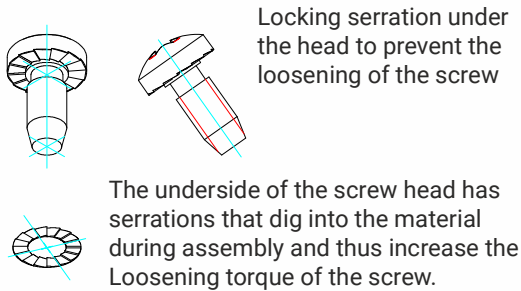


Chart 1.2

### Headforms

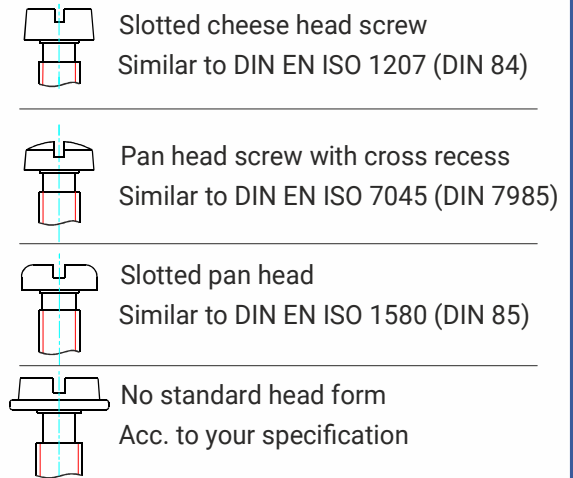


Chart 1.4

### Screw drive

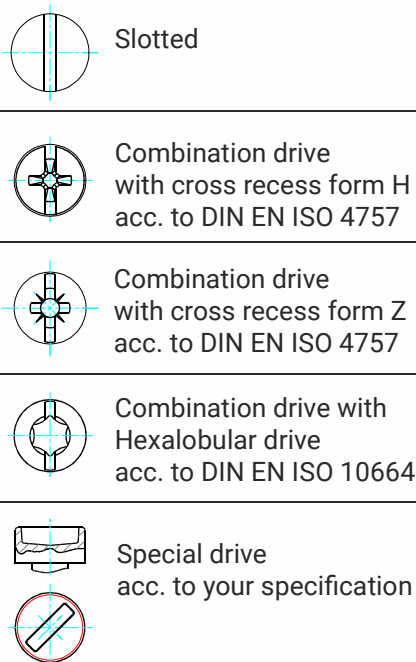


Chart 1.3

### Thread ends according to DIN EN ISO 4753

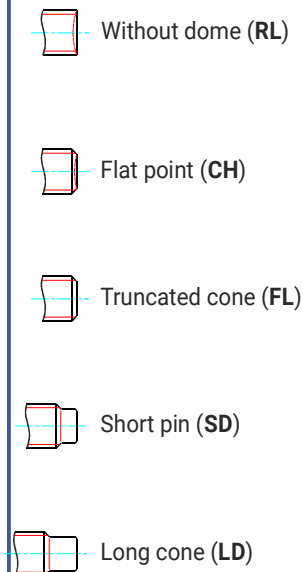


Chart 1.5

### Materials:

Carbon steel with strength classes 4.8 to 6.8  
Carbon steel with additives with strength classes 8.8 and 10.9 according to DIN EN ISO 898-1

Stainless steel (V2A) X 12 Cr Ni 18 8 according to DIN 10088

Brass CU Zn 37F38 / CW508L according to DIN EN 12163

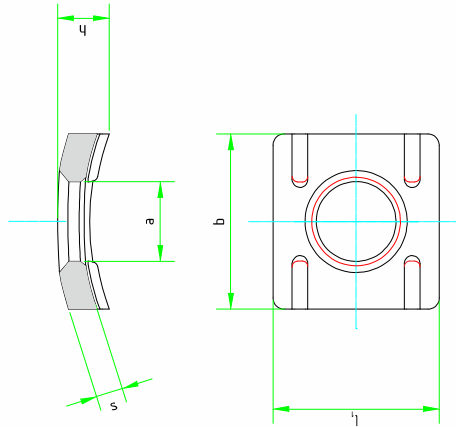
### Sample order:

Clamping screw M 3,5x8 ISO 1207,  
St. 8.8, thread end according to ISO 4753 RL  
Phillips ISO 4757-H2,  
with longitudinal slot: n 0,8, t 1,2  
Surface: A2F according to DIN ISO 4042

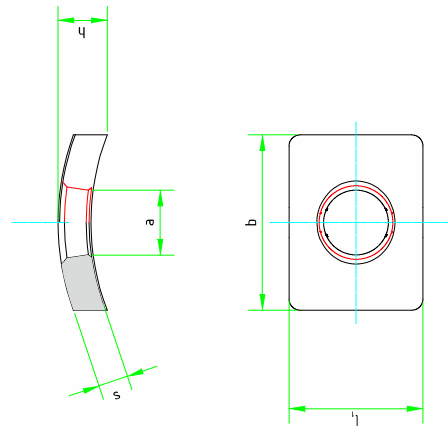
*Please contact us, we will be happy to advise you individually:*

**Washer shapes**

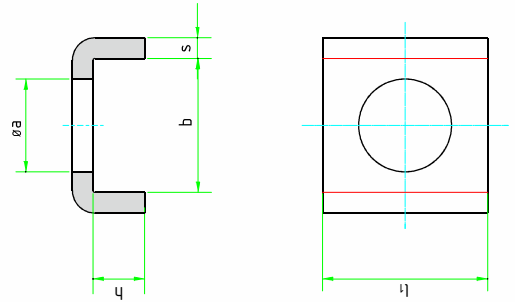
Form B with ribs  
Similar to DIN 46288



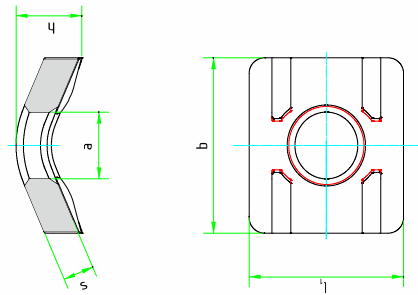
Form B acc. To DIN 46288



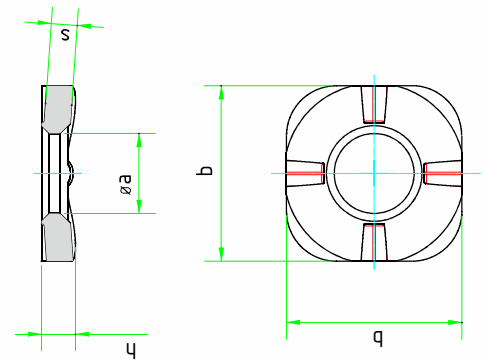
Clamping bracket  
form E, G and C  
Acc. to DIN 46282



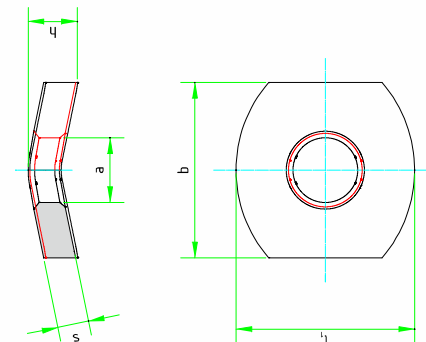
Form A with  
Ribs acc. to DIN 46288



Euro washer



Form A similar to DIN 46288



*Please contact us, we will be happy to advise you individually:*